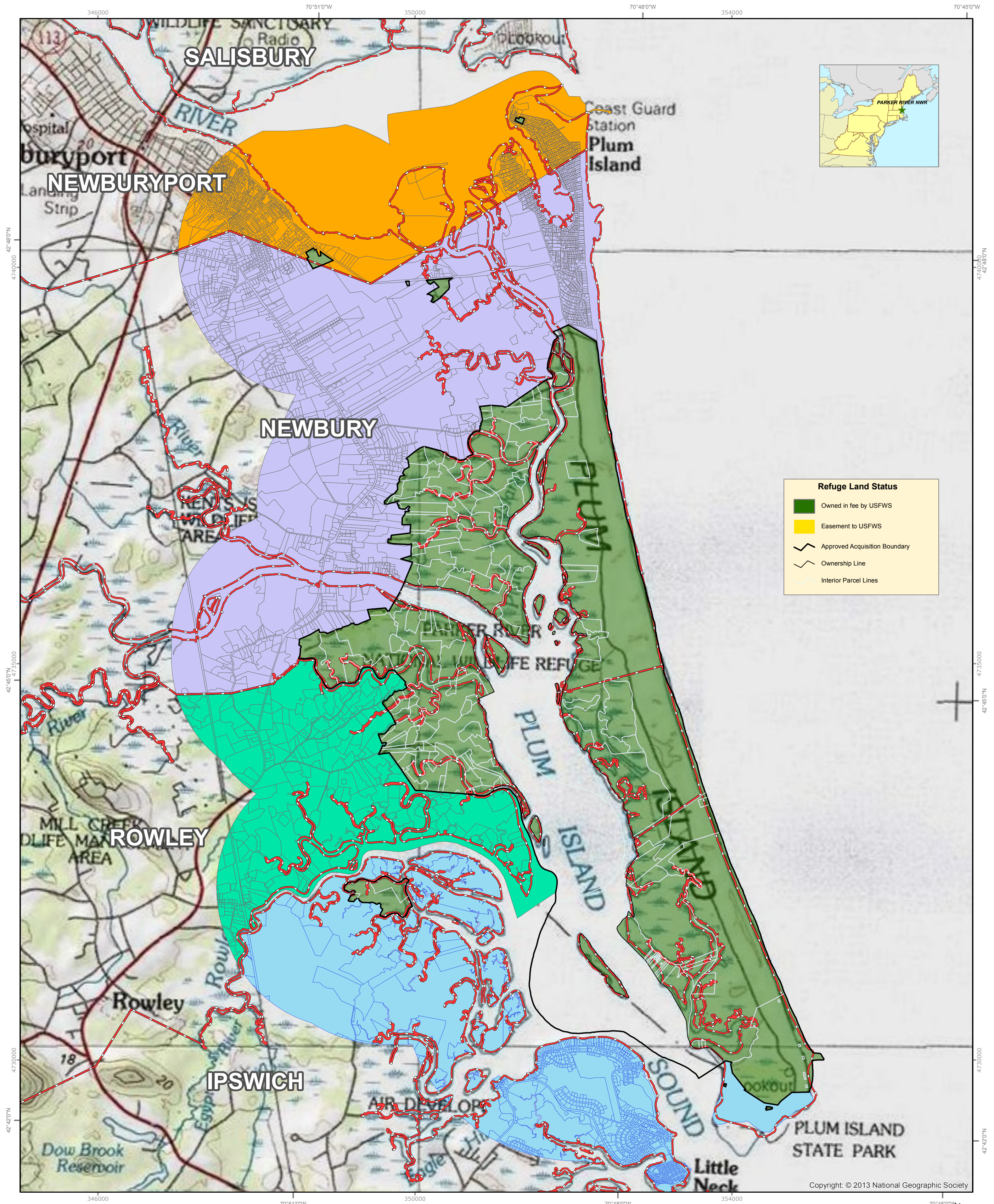




U.S. Fish & Wildlife Service

PARKER RIVER NATIONAL WILDLIFE REFUGE

Essex County, Massachusetts



Produced in the Division of Realty, Hadley, Massachusetts
Land Status Current to: fix Boundary Date!
Basemap: USGS 1:24,000 topographic map
Refuge boundaries: compiled from USFWS sources
Datum & Projection: NAD_1983_UTM_Zone_19N
Map Print Date: Thursday, September 08, 2016



This map is designed for refuge management.
It is not intended for use as a land survey or
as a representation of land for conveyance or tax purposes.
For more information visit the USFWS Northeast Region GIS
website at <http://northeast.fws.gov/gis/>



1 = 33,783